

Ivanti Device and Application Control 5.1 U2

Stand Alone Decryption Tool User Guide

ivanti

Endpoint Security

powered by HEAT

Notices

Version Information

Ivanti Device and Application Control Stand Alone Decryption Tool User Guide - Ivanti Device and Application Control Version 5.1 Update 2 - Published: May 2018

Document Number: 02_105_5.1 Update 2_172961156

Copyright Information

This document contains the confidential information and/or proprietary property of Ivanti, Inc. and its affiliates (referred to collectively as "Ivanti"), and may not be disclosed or copied without prior written consent of Ivanti.

Ivanti retains the right to make changes to this document or related product specifications and descriptions, at any time, without notice. Ivanti makes no warranty for the use of this document and assumes no responsibility for any errors that can appear in the document nor does it make a commitment to update the information contained herein.

For the most current product information, please visit: www.ivanti.com

Copyright® 2018, Ivanti. All rights reserved.

Ivanti and its logos are registered trademarks or trademarks of Ivanti, Inc. and its affiliates in the United States and/or other countries. Other brands and names may be claimed as the property of others.

Protected by patents, see www.ivanti.com/patents.

Table of Contents

Preface: About This Document	7
Typographical Conventions.....	7
Chapter 1: Stand-Alone Decryption Tool	9
Installing the Ivanti Device Control Stand Alone Decryption Tool.....	9
Unlocking Media with Stand Alone Decryption Tool.....	11



Preface

About This Document

This Stand Alone Decryption Tool User Guide is a resource written for all users of Ivanti Device and Application Control 5.1 Update 2. This document defines the concepts and procedures for installing, configuring, implementing, and using Ivanti Device and Application Control 5.1 Update 2.

Tip: Ivanti documentation is updated on a regular basis. To acquire the latest version of this or any other published document, please refer to the [Ivanti Product Documentation \(https://help.ivanti.com\)](https://help.ivanti.com).

Typographical Conventions

The following conventions are used throughout this documentation to help you identify various information types.

Table 1: Typographical Conventions

Convention	Usage
bold	Buttons, menu items, window and screen objects.
<i>bold italics</i>	Wizard names, window names, and page names.
<i>italics</i>	New terms, options, and variables.
MONOSPACE UPPERCASE	Keyboard keys.
BOLD UPPERCASE	SQL Commands.
monospace	File names, path names, programs, executables, command syntax, and property names.

Chapter 1

Stand-Alone Decryption Tool

In this chapter:

- Installing the Ivanti Device Control Stand Alone Decryption Tool
- Unlocking Media with Stand Alone Decryption Tool

You can access a device encrypted by Device Control from a computer that does not run the client by installing the **Stand Alone Decryption Tool** (SADEC).

You must download the Ivanti Device and Application Control application software from the Self-Service Portal. After you install SADEC, you can import an encryption key to access the encrypted removable storage device with a password. SADEC is supported on the following Microsoft operating systems:

- Microsoft Windows Server 2008 (32-bit and 64-bit)
- Microsoft Windows Server 2008 R2 (64 bit only)
- Microsoft Windows 7 (32- and 64-bit)

Restriction: SADEC cannot be installed on a computer that runs the client.

Installing the Ivanti Device Control Stand Alone Decryption Tool

You can install the Ivanti Device Control Stand Alone Decryption Tool to access encrypted removable storage devices through non-Ivanti Device and Application Control client computers.

Prerequisites:

Before you can successfully install the Stand Alone Decryption Tool, you must:

- Log in to the computer that will run the Ivanti Device Control Stand Alone Decryption Tool.
- Close all programs running on the computer.

-
1. From the location where you saved the Ivanti Device and Application Control application software, run the `\sadecl\setup.exe`.
 2. Click **OK**.

Step Result: The *Installation Wizard Welcome* page opens.

3. Click **Next**.

Step Result: The **License Agreement** page opens.

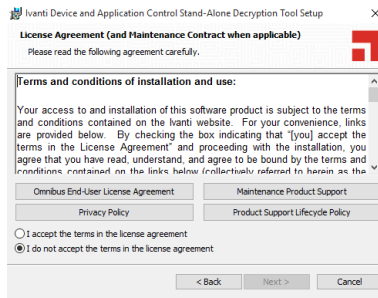


Figure 1: License Agreement Page

4. Review the license agreement and, if you agree, select **I accept the terms in the license agreement**.

5. Click **Next**.

Step Result: The **Destination Folder** page opens.

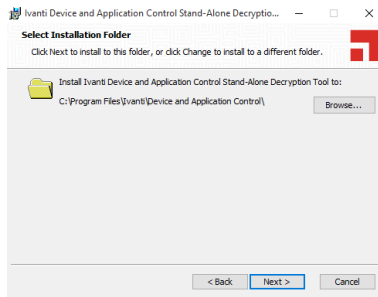


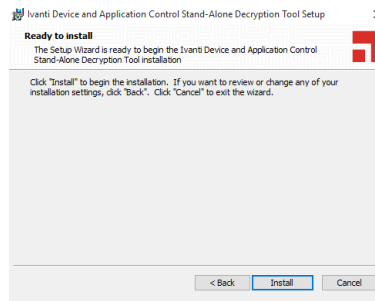
Figure 2: Destination Folder Page

6. You may choose an installation destination folder other than the default folder C:\Program Files \Ivanti\Device and Application Control\, by clicking **Change**.

7. Click **Next**.

Step Result: The **Ready to Install Program** page opens.

Figure 3: Ready to Install Program Page



8. Click **Install**.

A progress bar runs on the page, showing installation progress.

Step Result: The **Completed** page opens.

9. Click **Finish**.

Result: The Ivanti Device Control Stand Alone Decryption Tool is installed on the client computer.

After Completing This Task:

After successfully installing the Ivanti Device Control Stand Alone Decryption Tool, you can import an encryption key from a Ivanti Device and Application Control encrypted removable storage device to access the device with a unique password.

Unlocking Media with Stand Alone Decryption Tool

You can unlock an encrypted removable storage device using the Windows Explorer when the device is attached to a computer running the Stand Alone Decryption Tool (SADEC).

Prerequisites:

To successfully unlock an encrypted device after installing SADEC, you must first attach the device to the computer running SADEC.

To unlock an encrypted removable storage device:

1. Select Windows® **My Computer**.
2. Right-click the name of the device listed under **Devices with Removable Storage**.

Step Result: A right-mouse menu opens.

3. From the right-mouse menu, click **Unlock Medium**

Step Result: The **Import Medium Key** dialog opens.

4. Select one of the following options:
 - **Media** - The disk encryption key was exported on the encrypted media.
 - **Folder** - The disk encryption key was exported to a file that you can browse and select.
5. Type in the media password in the **Password** field.
6. Click **OK**.

Step Result: *SADEC* sends a message to the user confirming that the device is unlocked.

Result: The removable storage device is unlocked.