

Ivanti Workspace Control Core Edition Quick Start Guide

Contents

1. Introduction.....	2
About Ivanti Workspace Control Core Edition	2
About this Quick-Start Guide.....	2
Related Documents	2
2. Architecture and Components	2
Architecture.....	3
Components	3
3. Prerequisites.....	6
Hardware requirements	6
Database requirements	6
Operating system requirements.....	6
Test requirements	6
4. Installing Ivanti Workspace Control Core Edition and Setting Up Your Environment	7
Console Installation	7
Setting up the Datastore	14
Requesting a Core license.....	19
Agent Installation	28
Validate Agent Registration.....	34
Enable Ivanti Workspace Control to start	35
Prevent the composer from starting for specific users or groups	35
Central Storage location	36

Enumerating Users	37
5. Exploring Ivanti Workspace Control Core Edition	37
Configuring the Start Menu and its Applications	38
Shortcut Replace Mode	39
Further suggestions	40

1. Introduction

About Ivanti Workspace Control Core Edition

Ivanti Workspace Control Core Edition enables IT to configure, deploy, and manage operating system and application settings for Microsoft Windows users. The Core Edition is available free of charge and provides innumerable advantages for any organization. The Core Edition can be easily upgraded to any of the Ivanti Workspace Control Module Editions, which then makes it an even more comprehensive user workspace management solution.

About this Quick-Start Guide

This guide provides you with a starting point for your own journey of discovery through Ivanti Workspace Control Core Edition. To this end, it helps you set up a basic Ivanti Workspace Control environment through a local installation on a single Windows machine. It also provides some useful tips for an initial tutorial of the Ivanti Workspace Control Console.

Related Documents

If you want to know detailed information about the installation and configuration of Ivanti Workspace Control, please refer to the Installation section in the [Ivanti Workspace Control Administration Guide](#). These pages provide detailed installation procedures and options concerning a variety of environment types.

After the installation of Ivanti Workspace Control, the Online Help (accessible by pressing F1 while in the Management Console) provides detailed information about specific configuration tasks.

2. Architecture and Components

Ivanti Workspace Control Core has, compared to the different modules we have, some limitations in functionality but also in what extra features can and can not be used. For example the use of a Relay Server is being blocked in the Core version. The following section describes the architecture available for the Core version and the components that can be used.



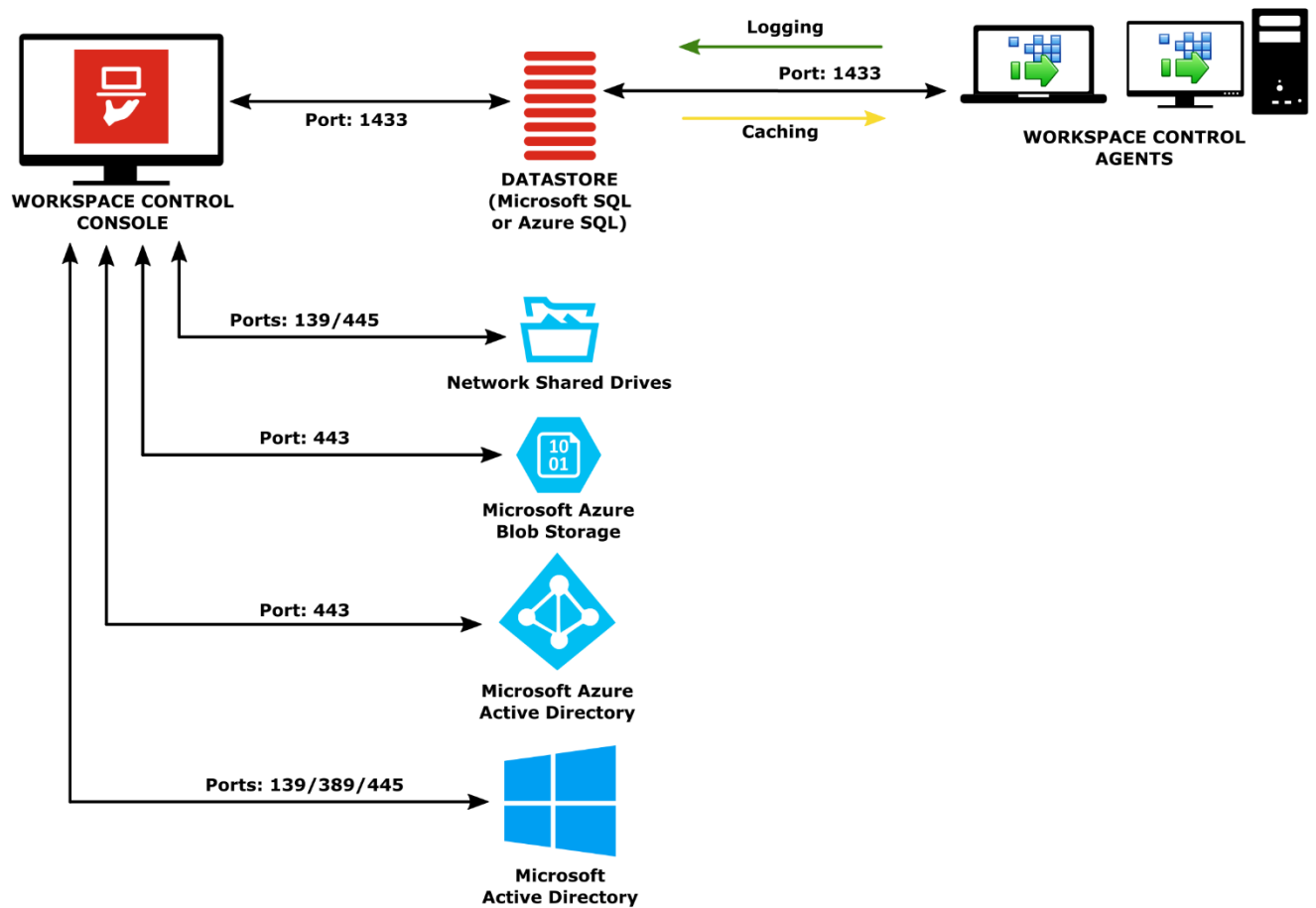
For a full list of capabilities per module please refer to the Administration Guide available here: [Workspace Control Module Comparison \(ivanti.com\)](#)

Architecture

The following illustration shows:

- How the Workspace Control components communicate with each other.
- How end-users (machines where the Workspace Control Agent is installed) can connect to the Workspace Control environment.
- What Microsoft services can be managed from the Workspace Control Console.

WO ivanti Workspace Control



Components

The Workspace Control Console

The Workspace Control Console is the central point of administration of the User Workspace. It is usually run from an administrator's workstation. The Workspace Control Console stores all the provided information in a database.

In the Workspace Control Console, the administrator can centrally manage context-aware workspaces that contain all the right applications, data, printing and personal settings essential for the users' productive working. It offers the Workspace Designer and several Wizards, helping the administrator to create workspace items according to business rules and compliance. With the Workspace Model, the administrator can control which parts should be composed and secured in the User Workspace.

Throughout the Console the size of the columns as they appear on screen can be adjusted. Customized column width or order of columns is saved automatically on the user's home drive or, if not available, in the user's registry. The option **Reset all column properties to defaults** in the **Options** menu, will reset any changes that you made to the order or widths of columns in the Console.

In every list view in the Console, one column is by default configured to auto size to fill out any remaining screen width. If you adjust the width of an auto-sizing column, it will no longer auto size and so you may end up with white space to the right of the columns.

The Workspace Control Console process, pwrtech.exe, has only one instance per device.

Some of the Wizards run as a single instance sub-process called wmwizrds.exe. Some configuration windows run as a single instance sub-process called wmedit.exe.

The Workspace Control Datastore

The Datastore is the central database for your Workspace Control environment. It contains all configuration settings of the user workspace. Each computer on which Workspace Control has been installed and that has a connection to a Datastore is an Agent of that Datastore.

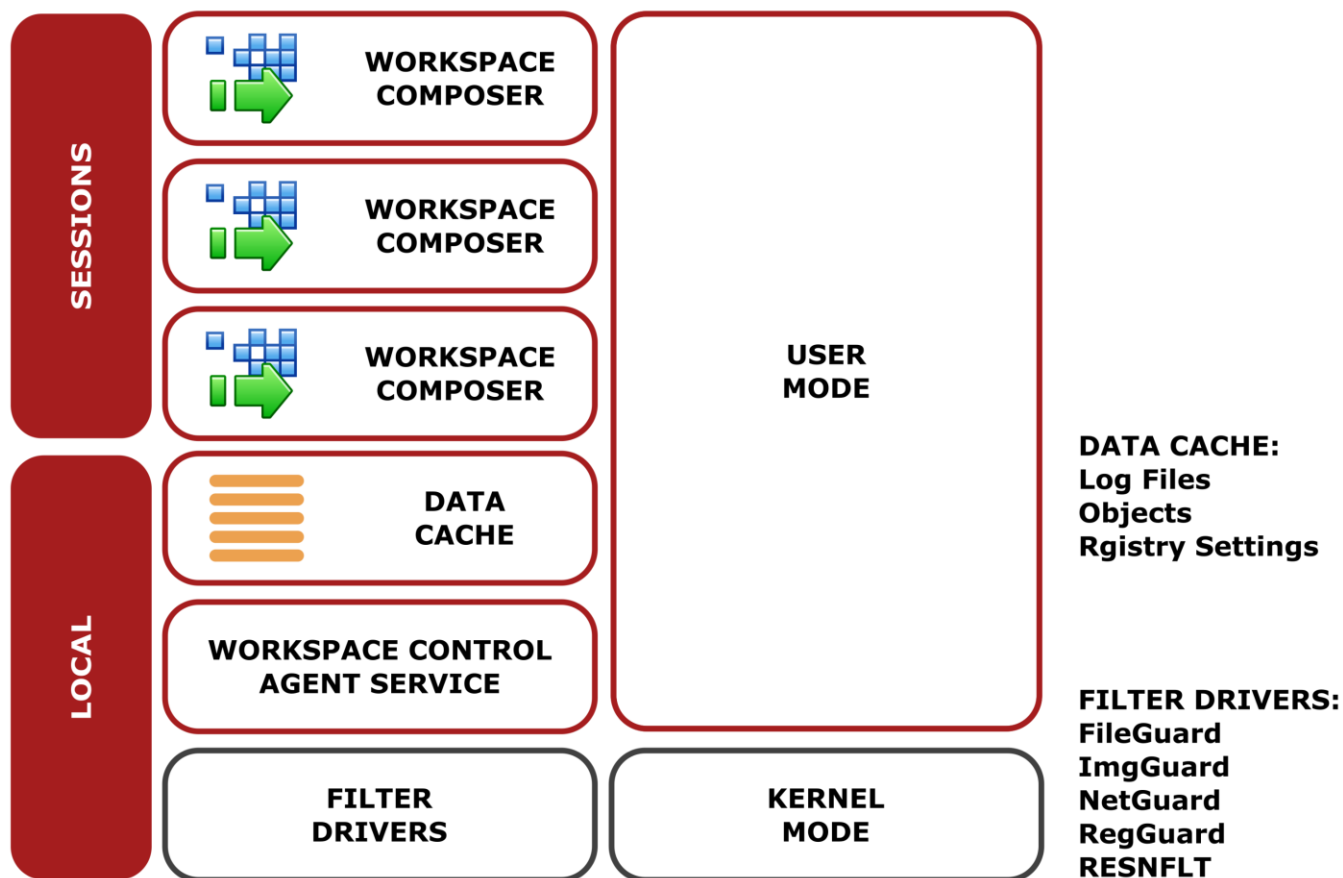
All computers in a Workspace Control environment connect to this database (optionally through a Relay Server). It runs on a central database server that you have installed prior to installing the Workspace Control Console. The Datastore and its Agents constantly interchange information about changed configuration settings.

See the [Compatibility Matrix Workspace Control](#) for a list of supported database types.

The Workspace Control Agents

An Agent is a computer on which Workspace Control is installed locally. This can be a Terminal Server, a workstation, a laptop or a VDI desktop. Each Agent is available in the agent overview of the Ivanti Workspace Control Core Management Console.

An important aspect of Workspace Control is the architecture of each Workspace Control Agent (i.e. each Terminal Server, workstation, virtual desktop, or laptop that runs Workspace Control). The following illustration provides a schematic overview:



Configuration data received from the Datastore is cached locally. Each Workspace Control Agent uses its cached data instead of connecting to the SQL database directly. This setup means that a session does not depend on connectivity, because information is not coming directly from the Datastore. All data is available in the local data cache, regardless of the availability of the Datastore.

The data cache also stores user information (log files and monitoring data) that is collected by each Workspace Control Agent. The Workspace Control Agent Service sends this data from the local cache to the Datastore for centralized access from the Management Console.

Each Agent presents the end user with a uniform workspace managed by Workspace Control: the Workspace Composer.

The Workspace Composer

The Workspace Composer is the Workspace Control-managed uniform workspace that the end users are presented with, regardless of the technology stack used. The Workspace Composer provides only the functionality that the end user needs. This includes all applications, menu items and settings to which the user is granted access.

The desktop can be displayed using either the Workspace Control Shell or the Microsoft Windows Shell. Both shells are managed by Workspace Control, but the Workspace Control Shell presents a classic windows-like shell with some additional Workspace Control-only technology, whereas the Microsoft Windows Shell is the exact shell as it is presented by Microsoft, including the various available themes. After installation of Workspace Control you need to configure the Workspace Composer as the default shell for your users (see [Configure the Workspace Composer](#)).

3. Prerequisites

To install the Core Edition, you need the Ivanti Workspace Control Core ##.##.##.#.msi installation file. The .msi is part of the Ivanti Workspace Control product download which is available at <https://forums.ivanti.com/s/article/Ivanti-Workspace-Control-revision-download-links>. Before you install the Core Edition, make sure the following requirements are met:

Hardware requirements

- All hardware must comply with the Microsoft Hardware Compatibility List (HCL) to run the Windows operating system of your choice.
- Each installation of Ivanti Workspace Control requires about 125 MB of hard disk space.
 - The product configuration cache requires additional hard disk space, depending on your configuration. Commonly the cache ranges between 5 and 250 MB.
- Each user session that is controlled by Ivanti Workspace Control requires approximately 30 MB of memory.

Database requirements

Ivanti Workspace Control Core Edition supports both Microsoft SQL Server and Microsoft Azure SQL as database providers. For more information about different requirements for each database provider, see the Ivanti Workspace Control Administration Guide: [Database Systems \(ivanti.com\)](#)



Ivanti advises not to use Microsoft SQL Express for a production environment to prevent production interference due to the limitations of Microsoft SQL Express.

Operating system requirements

Ivanti Workspace Control Core Edition supports the following Microsoft Windows Operating Systems:

- Microsoft Windows Server 2012 R2, 216, 2019, and 2022
- Microsoft Windows 10, and 11

For more information refer to the Ivanti Workspace Control Administration Guide: [Ivanti Workspace Control Administration Guide](#)



Microsoft .NET Framework 4.7.2 or higher is required for the Ivanti Workspace Control Core Edition.

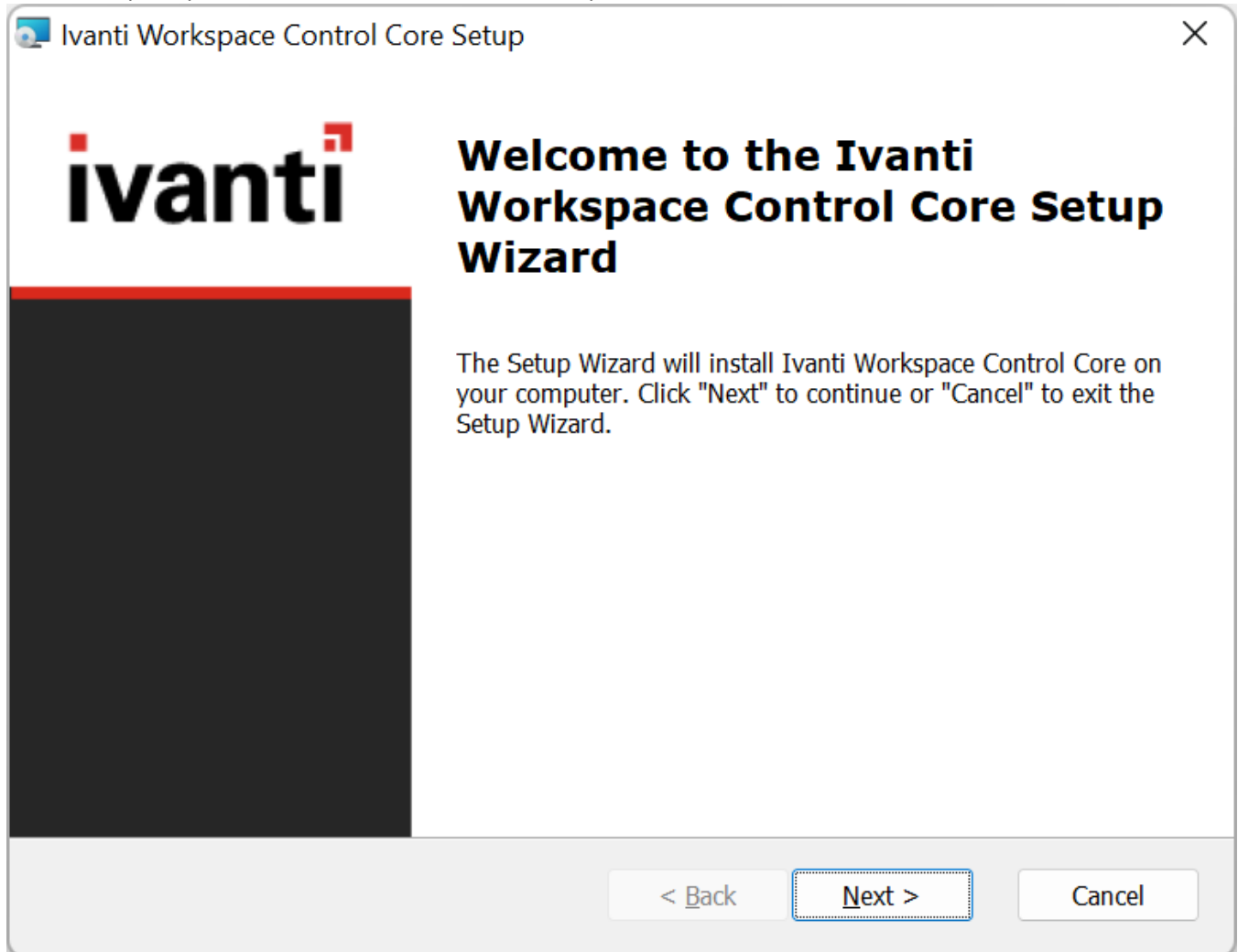
Test requirements

- Access to a functional Active Directory.
 - Access to a supported Microsoft SQL database platform.
 - Your administrator account, privileged to deploy software and create an SQL database.
 - Test applications, for example, Microsoft Edge Chromium.
-

4. Installing Ivanti Workspace Control Core Edition and Setting Up Your Environment

Console Installation


1. Start the Ivanti Workspace Control Core ##.##.##.#.msi file on your Windows machine that has direct access to the Microsoft SQL database platform. This will open the Setup Wizard, which will guide you through the setup process.
2. Follow the prompts on the screen and choose to setup a new environment.



Ivanti Workspace Control Core Setup
✕

End-User License Agreement

Please read the following license agreement carefully.



IVANTI END USER LICENSE AND SERVICES AGREEMENT

IMPORTANT: PLEASE READ THESE TERMS BEFORE ORDERING, INSTALLING, CONFIGURING AND/OR USING THE IVANTI SOFTWARE OR SAAS OFFERINGS. THIS DOCUMENT DESCRIBES THE RELATIONSHIP BETWEEN THE APPLICABLE IVANTI ENTITY AS DETERMINED IN ACCORDANCE WITH THIS DOCUMENT (“IVANTI”) AND YOU (EACH OF IVANTI AND YOU, A “PARTY” AND, COLLECTIVELY, THE “PARTIES”). THIS DOCUMENT ALSO MAKES REFERENCE TO ONE OR MORE ADDITIONAL DOCUMENTS WHICH ARE INCORPORATED INTO THIS DOCUMENT BY REFERENCE (“SUPPLEMENTAL TERMS”) (COLLECTIVELY

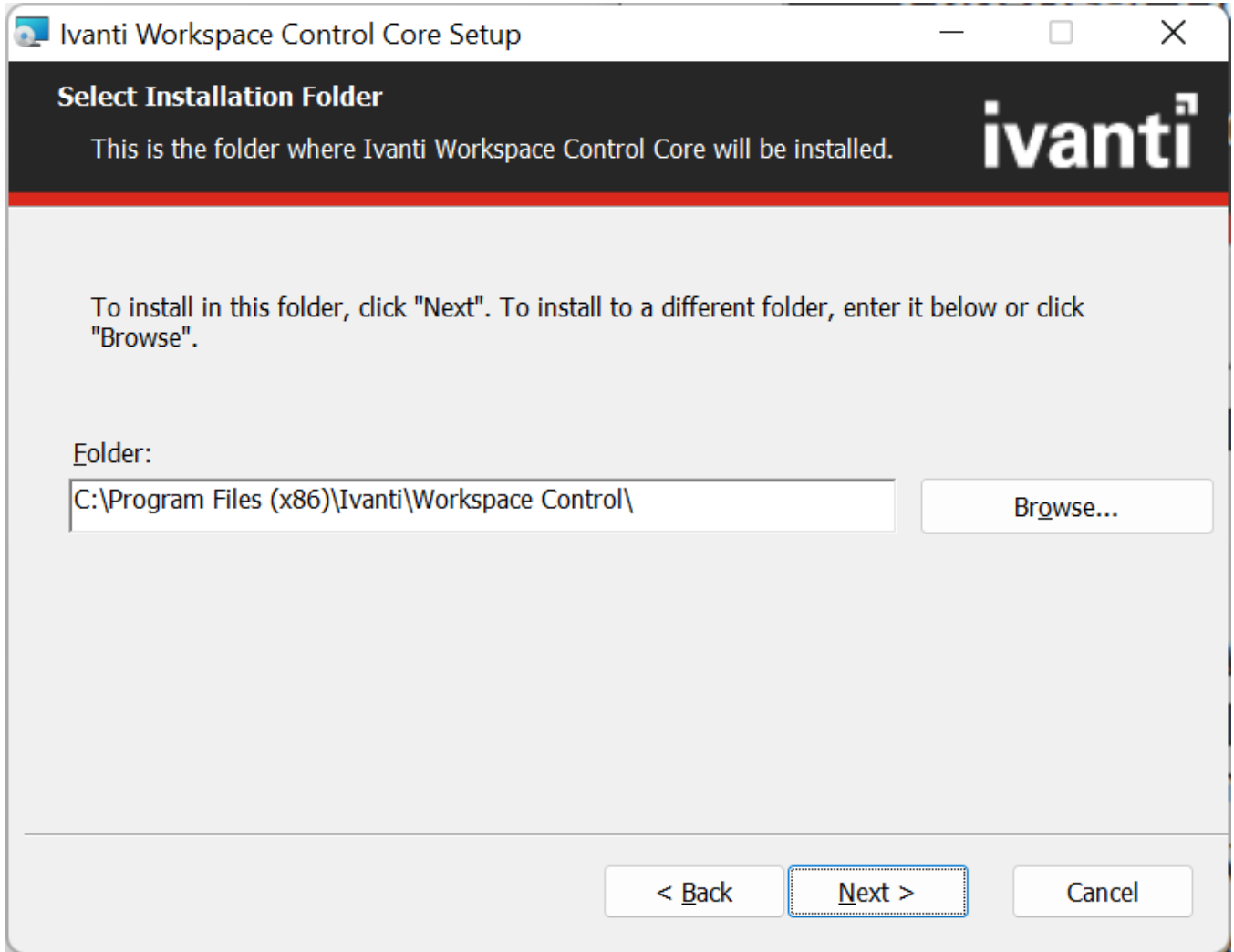
I acccept the terms in the License Agreement

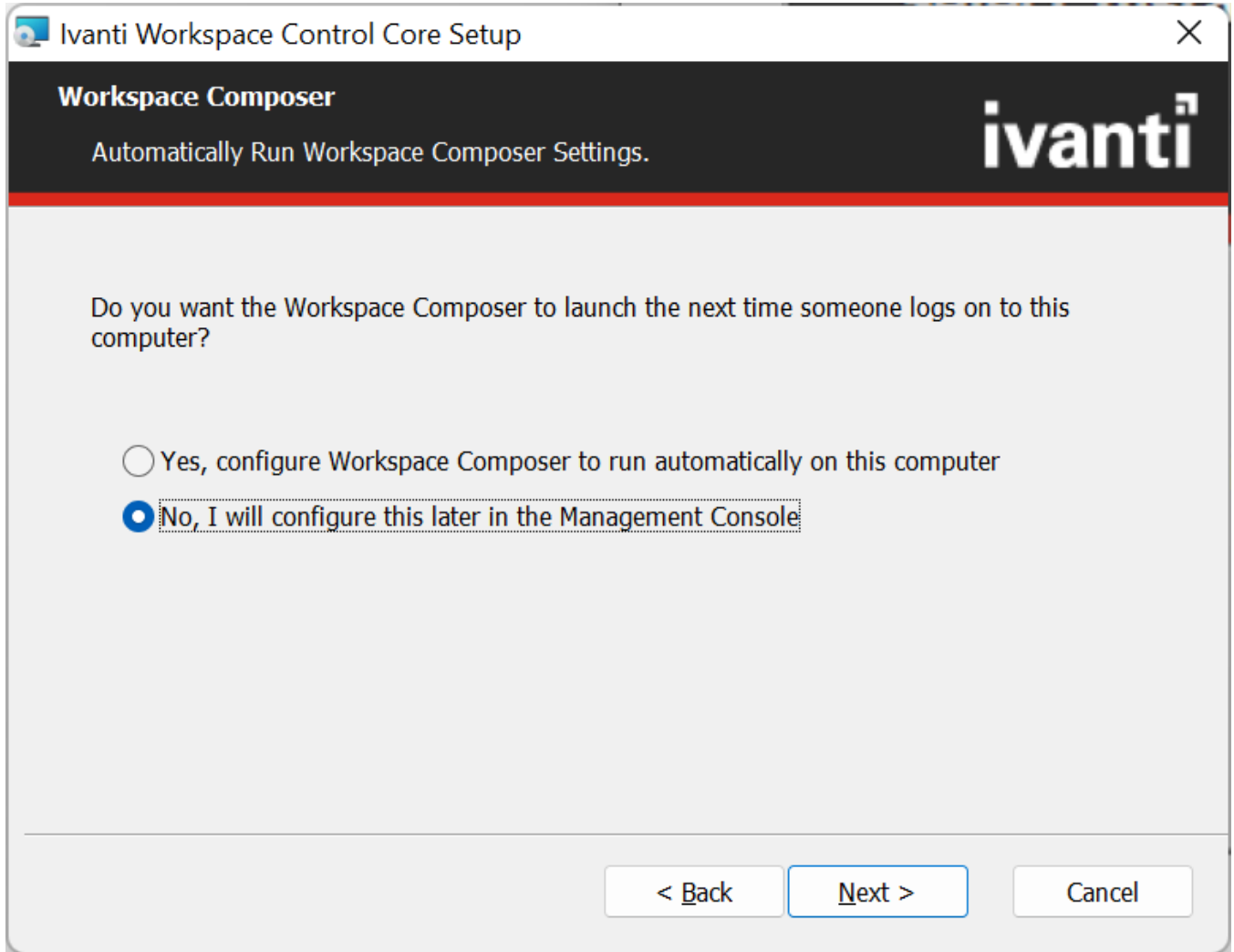
I do not accept the terms in the License Agreement

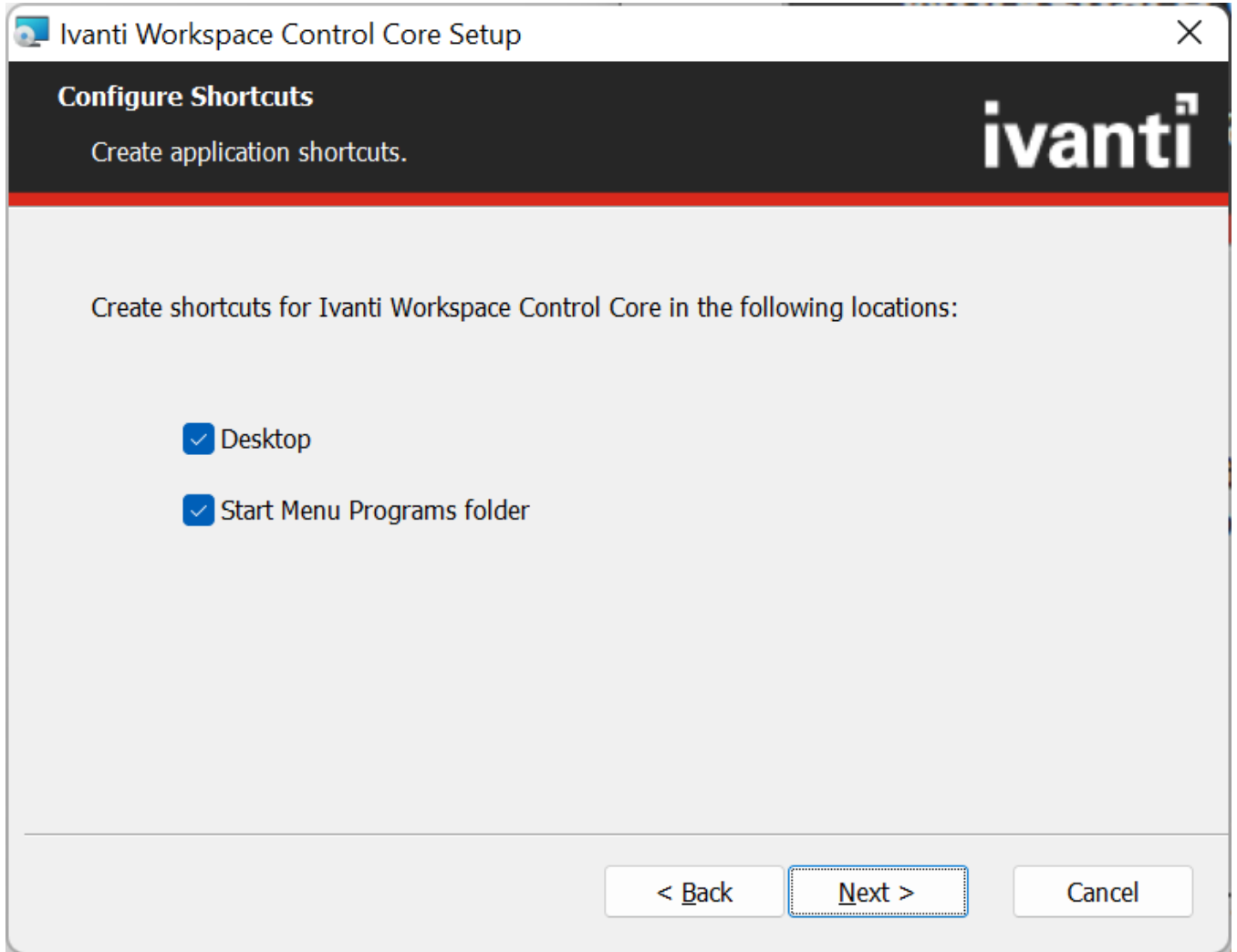
< Back

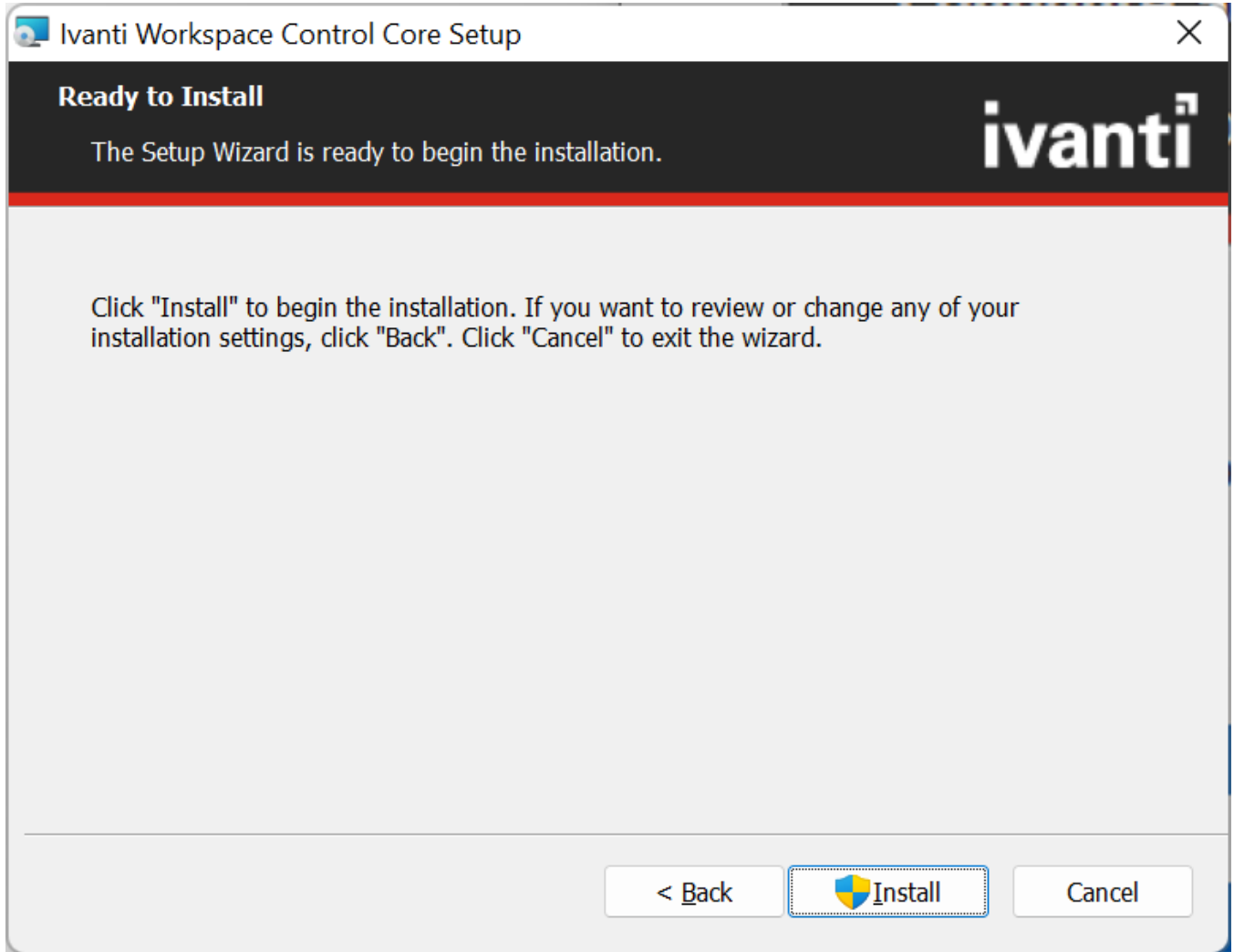
Next >

Cancel









Connection Wizard



Welcome to the Connection Wizard

This wizard will help you connect the installed Agent to a Ivanti Workspace Control environment.

Click "Next" to begin...

< Back

Next >

Cancel

Connection Wizard

New or existing Ivanti Workspace Control environment

What do you want to do next?

Connect to an existing environment

Set up a new environment (full setup required)

< Back
Next >
Cancel




One of the prompts will ask you if Ivanti Workspace Control Core should automatically start at session start. If prompted, choose NO.

Setting up the Datastore

1. Once you select to setup a new environment, the Datastore Wizard will start.
2. Click **Create** to create a new Datastore on the database server. Follow the prompts on the screen to provide:
 - a) The database server type and name along with the relevant (existing) DBA credentials; if configured on SQL level, then choose to use protocol encryption.
 - i If you choose to use Windows Authentication, then please make sure that the Ivanti Workspace Control Service runs as a Windows account with full access permissions to the database and is

local admin on any of the managed machines.

Datastore Wizard

 **Select a database server**
Please select or type the name of the server and supply credentials for creating a new database.


Database type:	Microsoft SQL Server
Database server:	SQL0027
Authentication:	SQL Server Login
Username:	sa
Password:	*****
Force protocol encryption:	Disabled

NOTE: Please refer to the compatibility matrix and prerequisites in the Help or the Administration Guide for the minimum requirements to use the selected database server type.

< Back Next > Cancel

- b) A name for the database that will become the Datastore. If your company requires you to use FIPS compliant algorithms then check the box for this.

Datastore Wizard

 **New database properties**
Please specify a name and the security options for the database.

Database name:


Use FIPS compliant security algorithms

NOTE: Configuring this database to use FIPS compliant security algorithms is irreversible.

< Back Next > Cancel

- c) Database file locations, are the locations configured as defaults on the database server.

Datastore Wizard

 **Database file locations**
Please specify the database and transaction log file locations and properties.

Create local datafile for database on server

File name: ...

Size: MB

Autogrow: ▾

Create local transaction logfile for database on server


File name: ...

Size: MB

Autogrow: ▾

- d) A (new) user name and password for access to the Datastore. This only applies if you choose to use SQL authentication. If Windows Authentication is used, you will need to select an existing user group.

Datastore Wizard



Datastore access account

Specify the login account for accessing the database from the Workspace Control Console.

Create a new SQL Server login

User name:


Password:

Confirm password:

Use Windows authentication

Active Directory group:

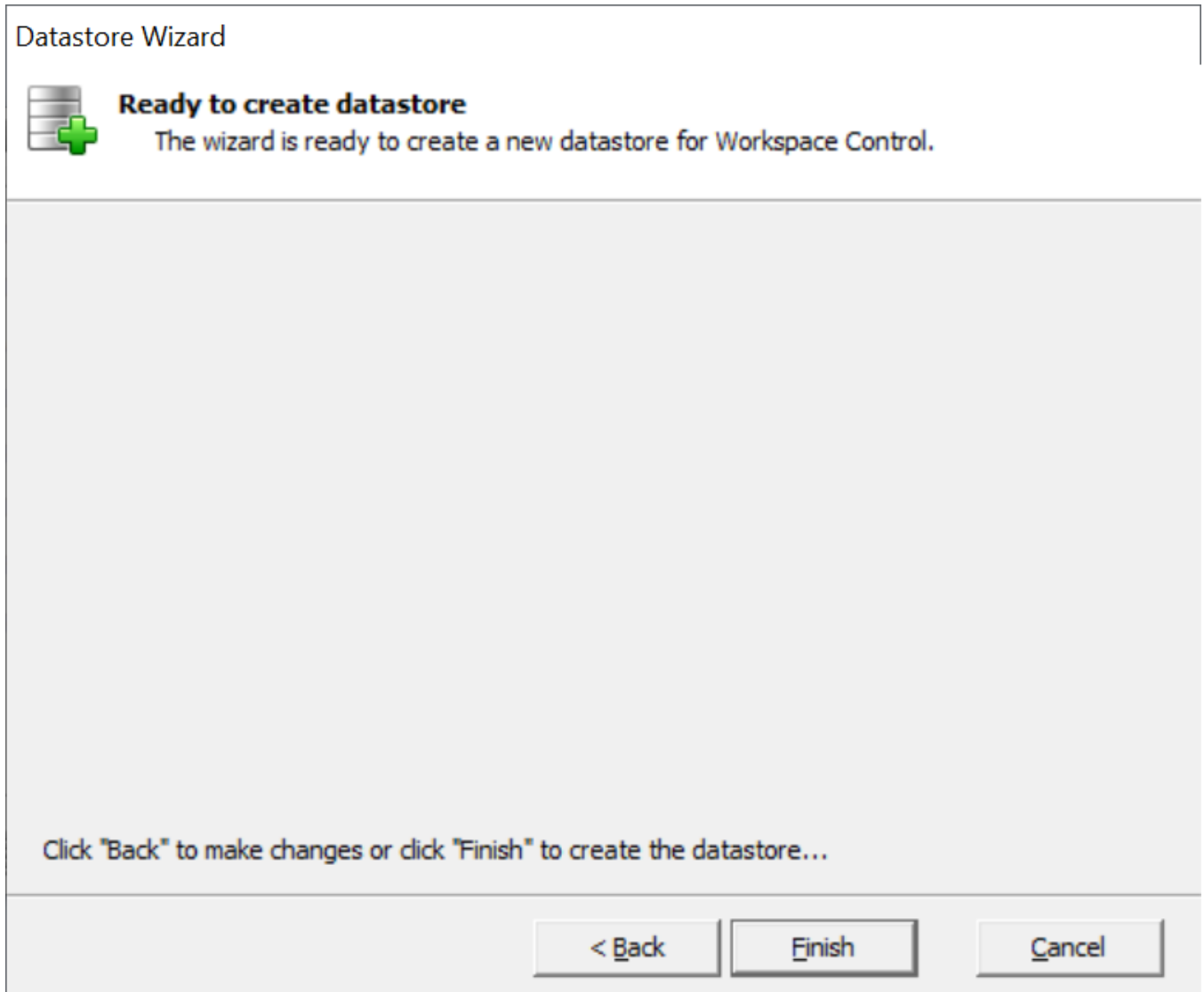
Prerequisites



Microsoft® SQL Server must be enabled for SQL Server Authentication. This is considered Mixed Mode authentication. Workspace Control will use a named SQL Server login ID to access the database.

NOTE: Please refer to the documentation for prerequisites when using Windows authentication.

3. Click **Finish**. This will create the Datastore, once finished click OK and restart the Console, after which all nodes will be available.



Requesting a Core license

Once the database has been created, click **Licensing** in the upper left corner of the Management Console. You will now need to click the orange button **Get Free Licenses....**

Licenses
Named Users
VDX Clients

License	Key	Count	Type	
Workspace Control Site ID	RES-9A5E-A39F-6D17-4F30-894B-5FE4-5822-8A13			
Evaluation license	RES-0000-0000-0000-0000-0000-0000-0000	25	Named Users	
Evaluation license	RES-0000-0000-0000-0000-0000-0000-0000	25	VDX Clients	

Get Free Licenses...

Module(s): [Core](#)

Licensed to: Evaluation license

Licensed status: OK

License alerting threshold:

If no license available at sign-in:

Named user count: 25 in total (0 claimed, 25 available)

VDX client count: 25 in total (0 claimed, 25 available)

License Wizard...
View...
Delete...



For the license process to work, the Ivanti Workspace Control Core Edition Console needs direct access to the internet. Access should not be blocked by any Proxy server or Firewall.

The License Wizard will start. Click **Next**.

Workspace Control Core License Wizard



Welcome

This wizard will help you get free licenses for Workspace Control Core.

After gathering some information about yourself and your organization, the wizard will send a report about the features and functionalities used in your Workspace Control site.

The free Workspace Control Core license will then be imported into your site and the Core functionality will become available for an unlimited number of users and without expiration date.

Click "Next" to begin...


< Back

Next >

Cancel

Fill out the Contact details form as presented to you and click **Next**.

Workspace Control Core License Wizard

 **Contact details (1/3)**
Please provide your contact details.

First Name:	<input type="text" value="First Name"/>
Last Name:	<input type="text" value="Last Name"/>
Company:	<input type="text" value="Company"/>
E-mail:	<input type="text" value="john@doe.com"/>
Job Title:	<input type="text" value="Job Title"/>
Phone:	<input type="text" value="00112345678"/>

NOTE: We need your e-mail address to send you the license certificate.

Now fill out the Organizational information form and click **Next**.

Workspace Control Core License Wizard



Organizational information (2/3)

Please provide information about your organization.

Country:

Street:

City:

ZIP code:

< Back

Next >

Cancel

Fill out the Business information form, and click **Next** to finish.

Workspace Control Core License Wizard



Business information (3/3)

Please provide some additional information about your organization and IT environment.

Industry:	Legal Services
Company size (# employees):	500-999
Planned IT projects:	User/Desktop Management
Project timeframe:	12+ months
Preferred partner:	Preferred partner
Are you downloading this software for a client:	No

< Back

Next >

Cancel

Click **Next** on the Customer Experience Feedback form and then click **Next** again.

Workspace Control Core License Wizard

**RES Customer Experience Feedback**

Help us improve Workspace Control.

Feedback is submitted when you register for Workspace Control Core and when you upgrade. It helps improve Workspace Control by submitting what features you have enabled and how you use Workspace Control.

Click "More information..." to see what information will be sent to Ivanti.

[More information...](#)< [Back](#)[Next](#) >[Cancel](#)

If the machine has a direct connection to the internet, license registration data will be submitted, this should take a few seconds. Once done, click **Next**.

Workspace Control Core License Wizard



Submitting license registration and feedback

Please wait...

- ✔ Preparing data...
- ✔ Creating connection...
- ✔ Sending data... 100%
- ✔ Finalizing...


< Back

Next >

Cancel

The license will now be imported in your database. Click **Finish**.

Workspace Control Core License Wizard

 **Submitting license registration and feedback**
Completed.


The free Workspace Control Core license will be imported into your site and the Core functionality will become available for an unlimited number of users and without expiration date.

Click 'Finish' to import your free Core license...

< Back Finish Cancel

Click **OK** to close the License Wizard, the Management Console will now restart to load the registered License.

Workspace Control Console ✕

 The Workspace Control Console will refresh to reflect the necessary changes.

OK

Click **Exit Setup** in the upper left corner to go to the main overview of the Management Console.

Agent Installation

The agent installation follows the same steps as the Console installation, instead of creating a datastore, you will now connect to the existing datastore.

1. Start the `Ivanti Workspace Control Core ##.##.##.#.msi` file on your Windows machine that has direct access to the Microsoft SQL database platform. This will open the Setup Wizard, which will guide you through the setup process.
2. Follow the same prompts on the screen as you did with the Console installation, once the Connection Wizard starts you will now choose to connect to an existing environment.



One of the prompts will ask you if Ivanti Workspace Control Core should automatically start at session start. If prompted choose **NO**.

Connection Wizard



Welcome to the Connection Wizard

This wizard will help you connect the installed Agent to a Ivanti Workspace Control environment.


Click "Next" to begin...

< Back

Next >

Cancel

Connection Wizard

 **New or existing Ivanti Workspace Control environment**

What do you want to do next?


Connect to an existing environment

Set up a new environment (full setup required)

< Back Next > Cancel

The use of Relay Servers is not supported in Ivanti Workspace Control Core Editions, therefore choose to connect directly to the database server.

Connection Wizard

 **Connection type**
Please select the type of connection.

How do you want to connect the Agent to the existing environment?

Connect this Agent directly to the Datastore

Connect this Agent to Relay Servers

< Back Next > Cancel

Fill in the same information used while creating the Datastore. Please note that this time you'll have to provide the login credentials for the account created with the Datastore Wizard to setup the actual Datastore.

Datastore Wizard



Datastore access account

Specify the login account for accessing the database from the Workspace Console.

Create a new SQL Server login

User name:


IvantiWorkspaceControl

Password:

Confirm password:

Use Windows authentication

Connection Wizard

 **Datastore connection**
Please specify the datastore of the relevant Ivanti Workspace Control environment.

Database type:

Database server:

Use Windows Authentication


Login:

Password:

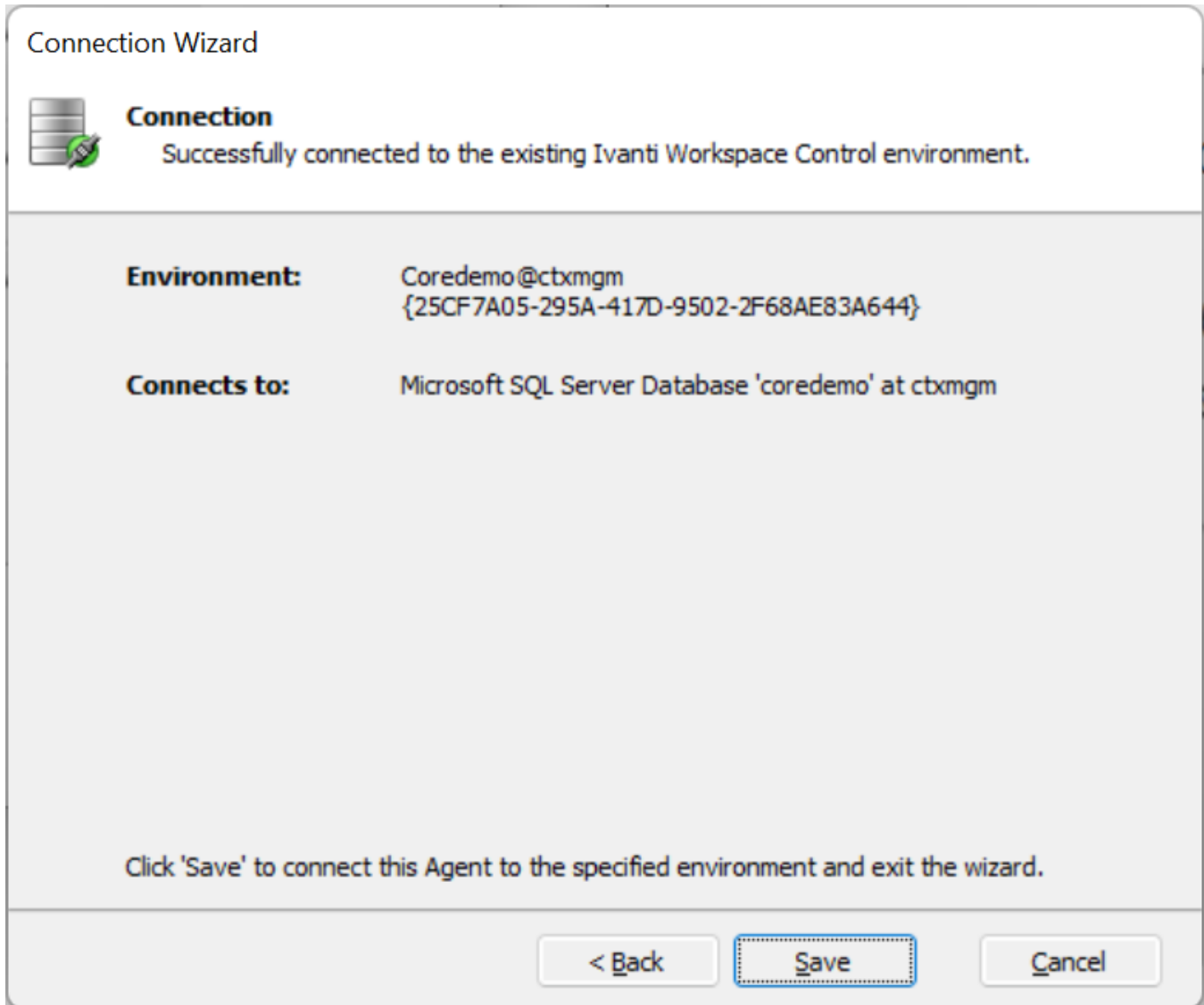
Database name:

Force protocol encryption:

Prerequisites

 Microsoft OLE DB driver or Native Client for SQL Server will be used if one is detected.

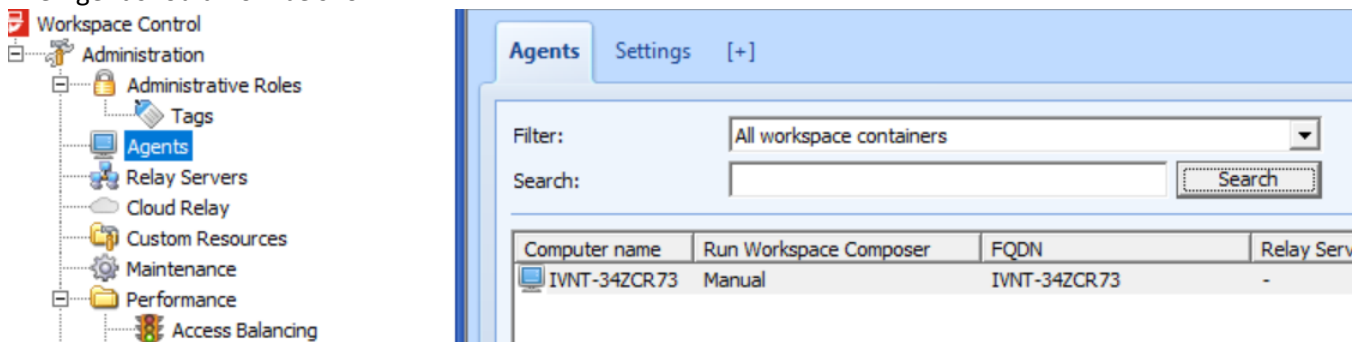
Click **Save** and then **Finish**.



Validate Agent Registration

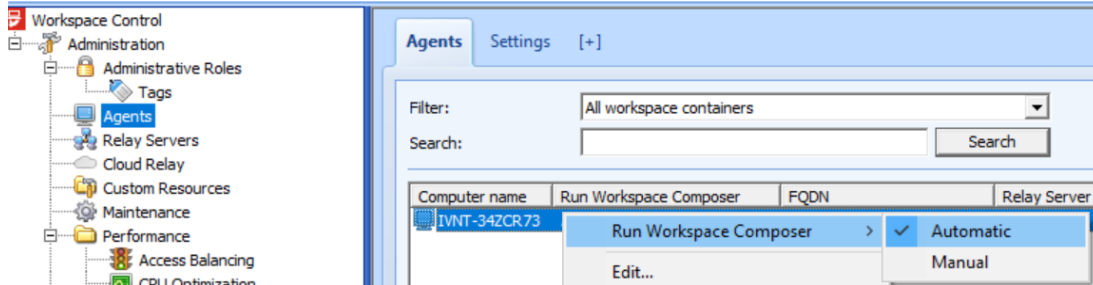
Now that the first Agent has been installed manually, the agent should be visible in the Management Console.

Open the Console and go to the **Administration > Agents** section, then press the Refresh button or the F5 key. The Agent should now be shown.



Enable Ivanti Workspace Control to start

Ivanti Workspace Control will not manage any session unless the Workspace Composer is switched from Manual to Automatic. From within the same view (**Administration > Agents**), right click the Agent and choose **Run Workspace Composer** and now set it to Automatic.



This will trigger a change in the database which will automatically be synchronized with any of the agents available in the environment. Any configuration created from within the console can now be applied in user sessions on machines running the Workspace Composer.



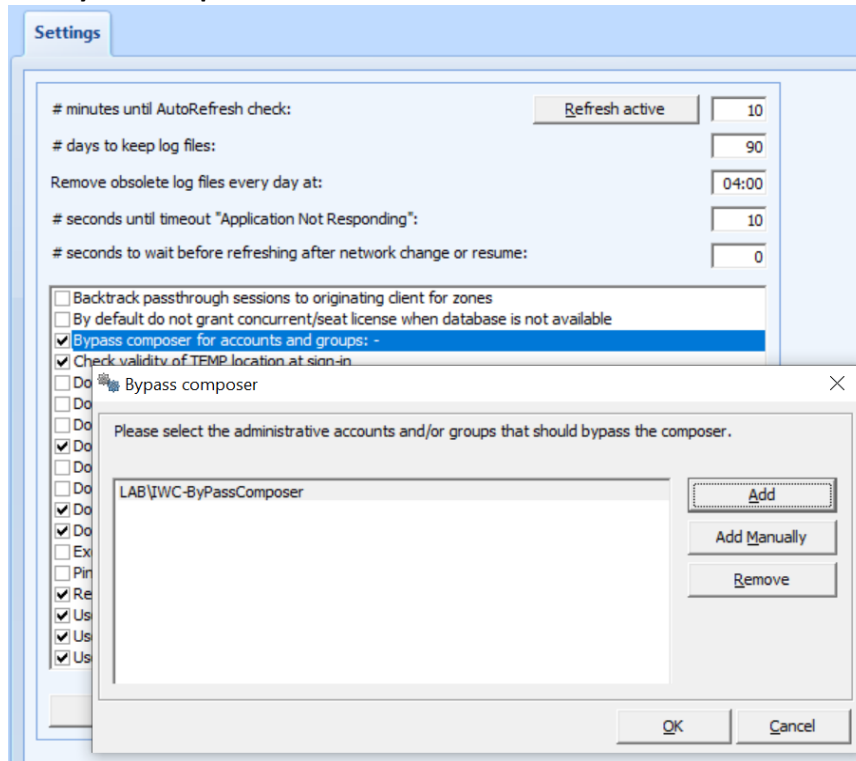
To start the composer on Terminal servers or Citrix XenApp servers, a GPO needs to be created to set the Custom User Interface. For more information see: [Configure the Workspace Composer as a Citrix XenApp Published Application \(ivanti.com\)](#)

Prevent the composer from starting for specific users or groups

A common configuration is to not start Ivanti Workspace Control Core Edition for specific users or groups. This can easily be configured from within the Management Console.

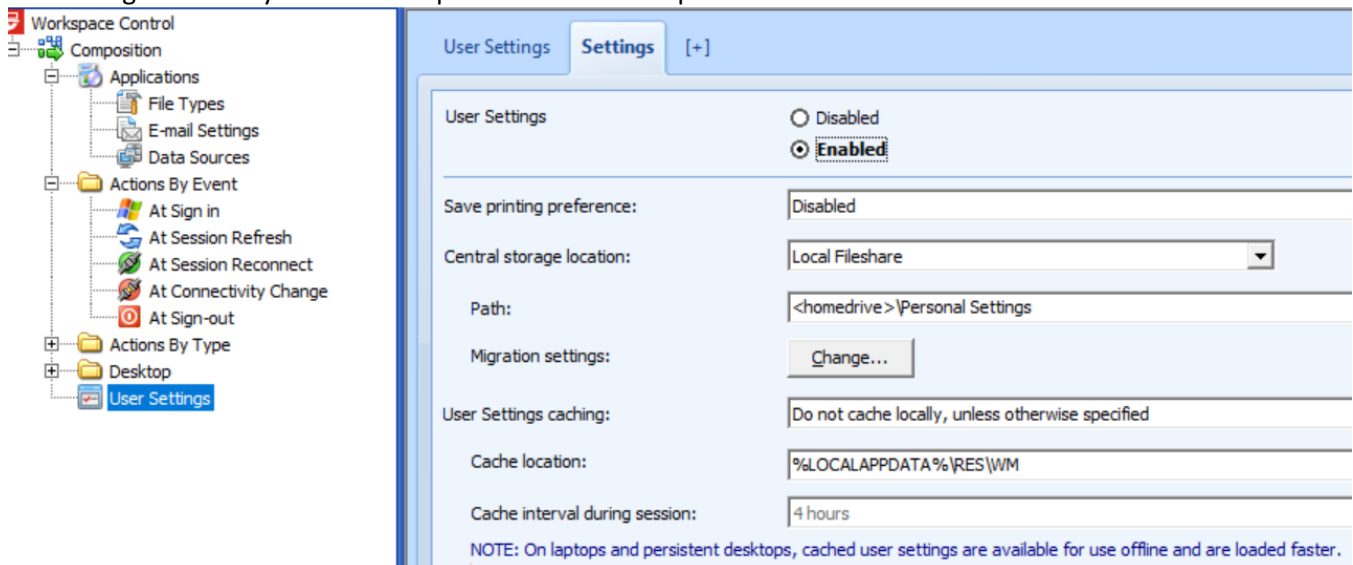
Go to **Setup > Advanced Settings**. Here you will find **Bypass composer for accounts and groups**. You can use this to browse the Active Directory and select the users or groups that should not be managed by Ivanti Workspace Control. In the following example Ivanti Workspace Control will not start for the Domain Group identified as

IWC-ByPassComposer.



Central Storage location

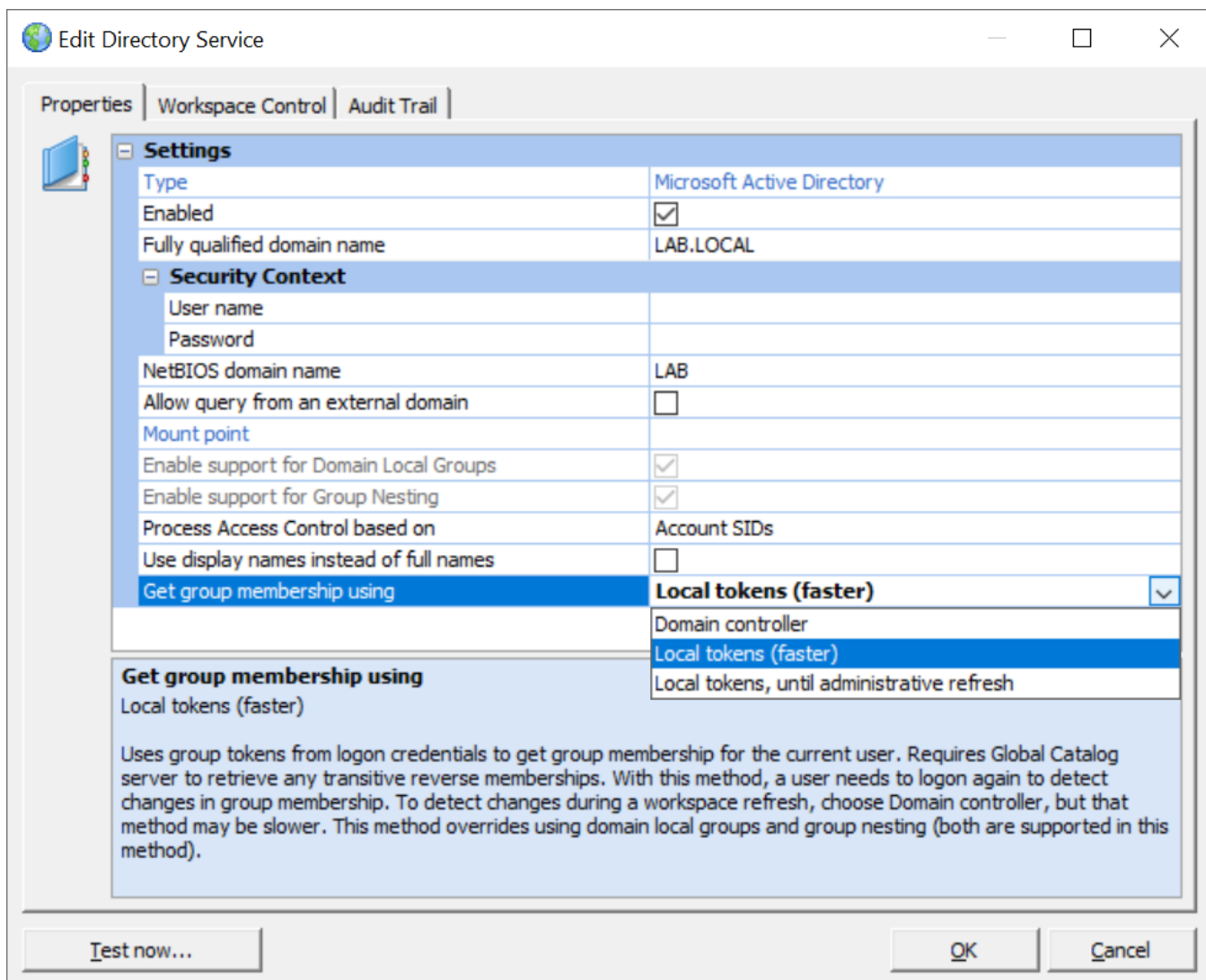
User Settings will be stored on a so-called **Central Storage Location**. By default this will be a folder called “Personal Settings” on the user home drive configured in AD/GPO. If desired, you can manually change this to any other UNC path by going into **Composition > User Settings** and configuring the Central Storage location on the settings tab or any of the Workspace Container exception tabs.



Please make sure the feature itself is set to **Enabled**, or else the configuration will not be applied. Enabling features is always done on the top of the **Settings** tab.

Enumerating Users

- In the **User Context** section, click the **Directory Services** node.
 - If you set up your quick-start Ivanti Workspace Control Core Edition environment on a computer that is a member of a Domain, this domain will have to be added as a primary Directory Service and you should be able to enumerate the existing domain, users, groups, and OUs.
- To increase the logon performance, change the **Get group membership using** option from **Domain Controller** to **Local tokens (faster)**.



- Click **Apply**.

5. Exploring Ivanti Workspace Control Core Edition

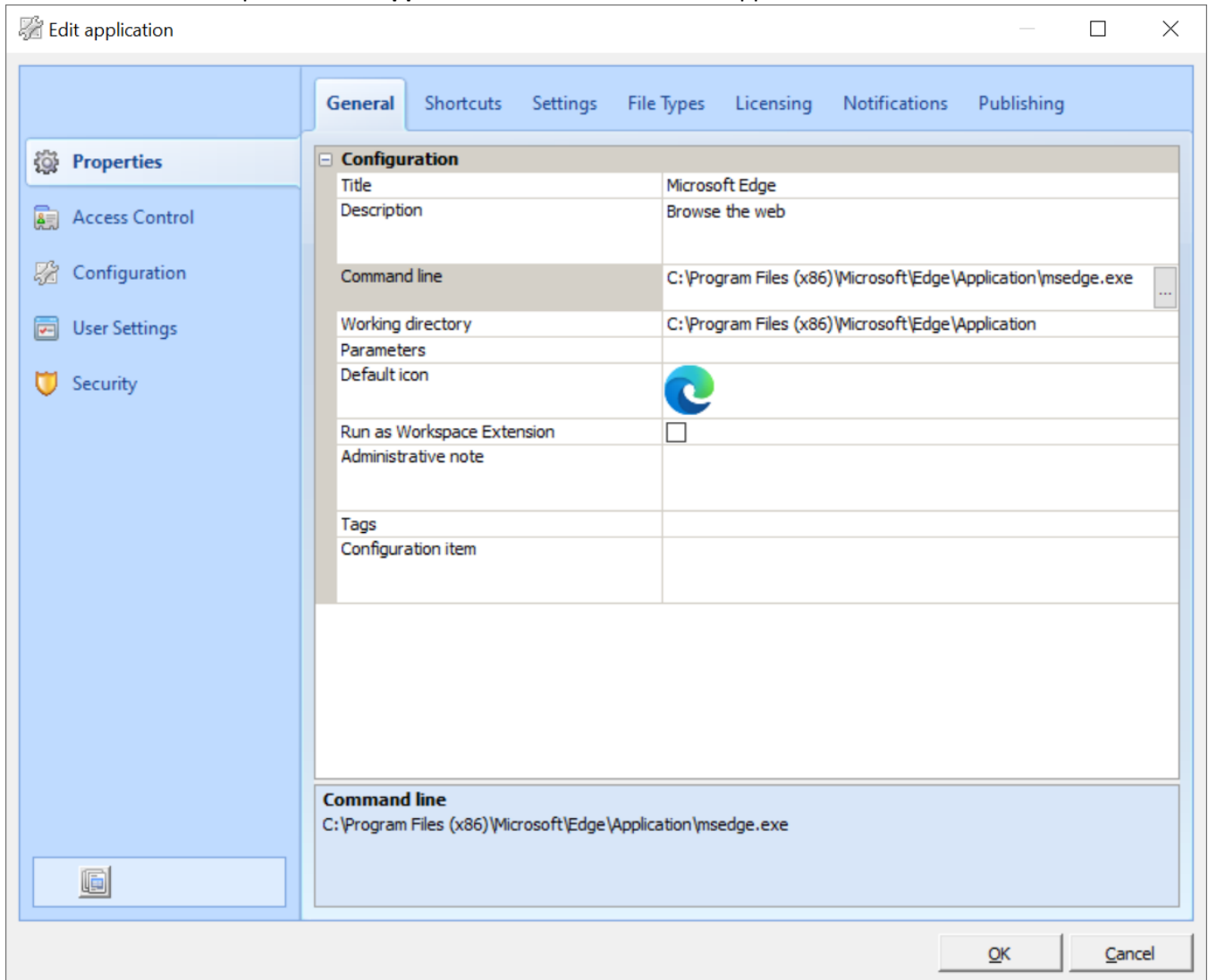
Now that you have set up a basic Ivanti Workspace Control environment, you can explore the many possibilities of Ivanti Workspace Control. We suggest consulting the Ivanti Workspace Control Administration Guide for additional information. To give a few examples:

Configuring the Start Menu and its Applications

In this example, Microsoft Edge Chromium will be added to your Ivanti Workspace Control environment. Each application will appear in a separate menu folder in the user's Start Menu:

1. Click the **Composition > Applications** section of the Ivanti Workspace Control Console.
2. Click the **Start Menu** tab.
3. Click **Add Menu**. This will open the **Ivanti Workspace Control Console: New menu** window.
4. Provide the menu title, description and location for the new menu called "Browsers".
5. Click **OK**.
6. Click **New Application**. This will open a Wizard that will assist you in configuring the application.
7. Follow the Wizard prompts:
 - a) Provide the command line, working directory and parameters (all optional) for Microsoft Edge Chromium.
 - b) Provide application title (required) and a description for the user (optional).
 - c) Grant all users access to the application.

- Click **Finish**. This will open the **Edit application** window for the new application.



- A common factor in most of the Ivanti Workspace Control windows is **Access Control**. With Access Control you can provide access to the configuration object.

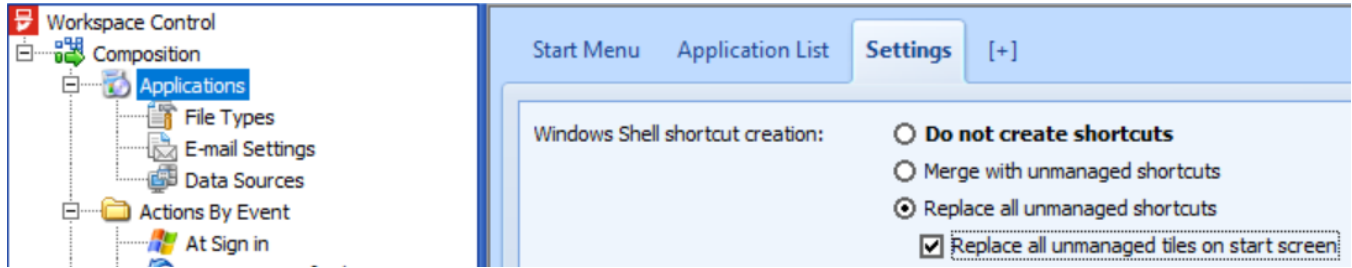
- Click **OK**.

Shortcut Replace Mode

Ivanti Workspace Control can merge or replace the existing Start Menu Application shortcuts, in this example we will replace all shortcuts with the Microsoft Edge Chromium shortcut we created in the Console.

- Goto **Composition > Applications** and open the **Settings** tab or any of the Workspace Container Exception tabs.

2. Select **Replace all unmanaged shortcuts** and **Replace all unmanaged tiles on start screen**, this will hide any of the non-managed shortcuts



3. Save these settings by clicking **Save Settings** in the top ribbon.
4. If you would now login to a machine managed by Ivanti Workspace Control Core Edition, the Start Menu will only show Microsoft Edge Chromium and several default UWP apps.



Ivanti Workspace Control will not remove UWP shortcuts, FSLogix AppMasking should be used to restrict access to any of these UWP Application shortcuts.

Further suggestions

Press F1 key in the Management Console for more information about these tasks:

- Zones – Used to allow/deny access to configuration objects based on common device-based criteria: [Locations and Devices: Zones \(ivanti.com\)](https://www.ivanti.com/locations-and-devices/zones)
- Workspace Containers – Used to create Feature exceptions other than the default settings available on a Settings tab: [Workspace Containers \(ivanti.com\)](https://www.ivanti.com/workspace-containers)
- Drive Mappings – Map specific drives based on access control and user session context: [Drive and Port Mappings \(ivanti.com\)](https://www.ivanti.com/drive-and-port-mappings)
- User Settings - capture specific profile related data: [User Settings \(ivanti.com\)](https://www.ivanti.com/user-settings)
- Execute Commands – Integrate PowerShell, VBS or batch scripts into the user session: [Execute Command \(ivanti.com\)](https://www.ivanti.com/execute-command)
- Desktop Background - Customize the appearance of the user desktop by setting different background images for different users: [Background \(ivanti.com\)](https://www.ivanti.com/background)