

Getting Started with

**RES ONE**®

**Workspace**

Management Portal

Version 10.1.0.0

Copyright © RES Software Development B.V. All rights reserved. Commercial Computer Software documentation/data - Restricted Rights. RES ® and RES ONE ® are registered trademarks and service marks of RES Software B.V. internationally. The software licensed by RES Software B.V. or RES Software, Inc. is covered by patents, any patents pending, granted to and/or owned by RES Software Development B.V. and as identified on [www.res.com/legal-statements](http://www.res.com/legal-statements).

#### **Disclaimer**

While care has been taken by RES to ensure that the information contained in this document is correct and complete, it is possible that this is not the case. RES provides the information "as is", without any warranty of any kind. To the maximum extent permitted by applicable law, RES is not liable for any damage which has occurred or may occur as a result of or in any respect related to the use of this information. RES may change or remove this document at any time without notice and shall not be responsible for any consequence(s) arising therefrom. RES is not responsible for any contributions by third parties to this information.

# Contents

<b>Chapter 1:</b>	<b>Introduction</b>	<b>1</b>
<hr/>		
<b>Chapter 2:</b>	<b>Installation</b>	<b>2</b>
2.1	Prerequisites .....	2
2.2	Install the RES ONE Workspace Management Portal .....	4

## Chapter 1: Introduction

This document describes how to set up the RES ONE Workspace Management Portal.

Currently, the following features are available in the RES ONE Workspace Management Portal:

- **Executables Security** and **File Hashes Security**, which we are in the process of redesigning as two separate features.
- Previews of the new **File Certificates Security**, which we will be extending further in upcoming releases.
- **Security Logs: Executables, File Hashes, User Installed Applications, Files & Folders, Read-Only Blanketing, Removable Disks, Websites, Network Connections, and User Sessions.**
- **Workspace Analysis**
- **Audit Trail**
- **Datastore Setup**, where you can connect to the **Primary Datastore** of your existing RES ONE Workspace environment, configure an **API key** and **Authentication type**.
- **Reporting Setup**, for integration with **RES Reporting**.

After installation of the Management Portal, a Help is available from the ? icon in the top right corner of the menu bar.

## Chapter 2: Installation

The RES ONE Workspace Management Console and Management Portal can be used side by side.

Optionally, you can force Console users to start using the Management Portal for features that are available there. To do so, enable **Management Portal Integration** in the Management Console at **Setup > Management Portal**, and specify the URL of your Management Portal. This will replace the **Workspace Analysis** and **Audit Trail** nodes in the Management Console with a brief explanatory text and a button to open the feature in the Management Portal.

### 2.1 Prerequisites

Software installed on system	Prerequisites
.NET	Microsoft .NET Framework 4.5.2 or higher
Operating System	<p>We recommend installing the RES ONE Workspace Management Portal on a web server. For evaluation purposes, you can also install it on a workstation. We do not recommend installing it on a domain controller.</p> <p>Supported Operating Systems:</p> <ul style="list-style-type: none"> <li>• Microsoft Windows Server 2016 x64</li> <li>• Microsoft Windows 10 x86/x64</li> <li>• Microsoft Windows 8.1 x86/x64</li> <li>• Microsoft Windows 8 x86/x64</li> <li>• Microsoft Windows 7 x86/x64 (the option <b>Generate Self-signed certificate</b> is not supported on this OS version)</li> <li>• Microsoft Windows Server 2012 R2 x64</li> <li>• Microsoft Windows Server 2012 x64</li> <li>• Microsoft Windows Server 2008 R2 x64 (the option <b>Generate Self-signed certificate</b> is not supported on this OS version)</li> </ul>
Microsoft Windows Installer	Microsoft Windows Installer 3.1
Database Client	Database Client for the type of database used for the RES ONE Workspace Datastore. Microsoft SQL and Microsoft SQL Azure are supported database types.
Browser	<p>Supported browsers:</p> <ul style="list-style-type: none"> <li>• Microsoft Internet Explorer 11</li> <li>• Microsoft Internet Explorer 10</li> <li>• Microsoft Edge</li> <li>• Mozilla Firefox 47 or higher</li> <li>• Google Chrome 52 or higher</li> <li>• Safari 9.0 (Mac only) or higher</li> </ul>
Browser	Enable JavaScript

Web server	Prerequisites
Permissions	Administrator permissions
Internet Information Services (IIS)	IIS 7.0 or higher

Microsoft Windows features installed on Web server	Necessary features for Microsoft Windows Server 2008 R2	Necessary features for Microsoft Windows Server 2012 / 2012 R2
Microsoft .NET Framework	<ul style="list-style-type: none"> <li>Version 4.5.2 or higher.</li> <li>To support Microsoft Internet Explorer 10, install all available Microsoft Windows updates for .NET Framework 4.5.2 first.</li> </ul>	<ul style="list-style-type: none"> <li>Version 4.5.2 or higher.</li> <li>ASP.NET 4.5</li> </ul>
<b>Web Server (IIS)</b>		
Web Server	<ul style="list-style-type: none"> <li>Common HTTP Features</li> <li>Static Content</li> <li>Default Document</li> <li>HTTP Errors</li> <li>HTTP Redirection</li> </ul>	<ul style="list-style-type: none"> <li>Common HTTP Features</li> <li>Static Content</li> <li>Default Document</li> <li>HTTP Errors</li> <li>HTTP Redirection</li> </ul>
Application Development	<ul style="list-style-type: none"> <li>ASP.NET</li> <li>.NET Extensibility</li> <li>ISAPI Extensions</li> <li>ISAPI Filters</li> </ul>	<ul style="list-style-type: none"> <li>ASP.NET 4.5</li> <li>.NET Extensibility 4.5</li> <li>ISAPI Extensions</li> <li>ISAPI Filters</li> </ul>
Health and Diagnostics	<ul style="list-style-type: none"> <li>HTTP Logging</li> <li>Request Monitor</li> </ul>	<ul style="list-style-type: none"> <li>HTTP Logging</li> <li>Request Monitor</li> </ul>
Security	<ul style="list-style-type: none"> <li>Basic Authentication</li> <li>Windows Authentication</li> <li>Client Certificate Mapping Authentication</li> <li>IIS Client Certificate Mapping Authentication</li> <li>Request Filtering</li> </ul>	<ul style="list-style-type: none"> <li>Basic Authentication</li> <li>Windows Authentication</li> <li>Client Certificate Mapping Authentication</li> <li>IIS Client Certificate Mapping Authentication</li> <li>Request Filtering</li> </ul>
Performance	<ul style="list-style-type: none"> <li>Static Content Compression</li> <li>Dynamic Content Compression</li> </ul>	<ul style="list-style-type: none"> <li>Static Content Compression</li> <li>Dynamic Content Compression</li> </ul>
Management Tools	<ul style="list-style-type: none"> <li>IIS Management Console</li> <li>Management Service</li> </ul>	<ul style="list-style-type: none"> <li>IIS Management Console</li> </ul>

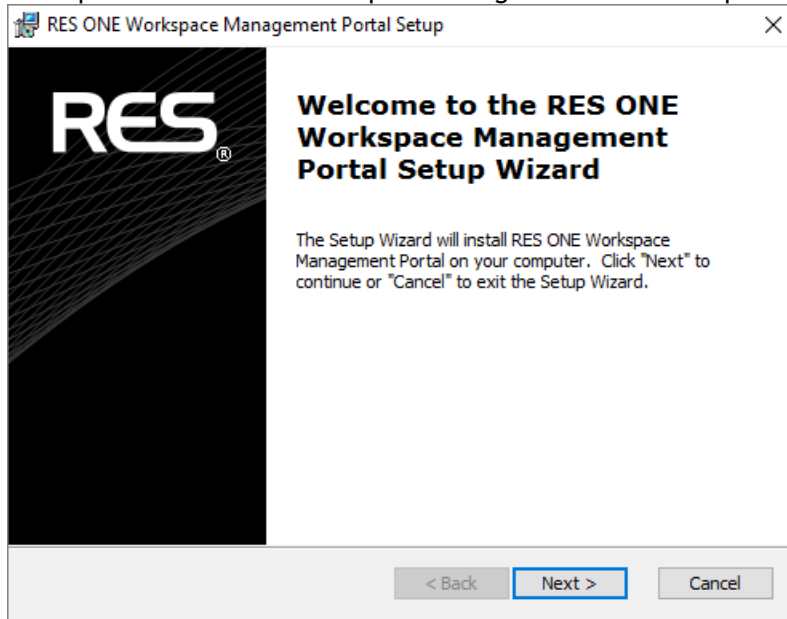
If **RES Reporting** is installed in your RES environment, and **Usage Tracking** is enabled in the Management Console, you can integrate it with the Management Portal. For this integration you need the URL to the Reporting server.

If **RES Identity Broker** is installed in your RES environment, you can integrate it with the Management Portal. For this integration you need the URL to the Identity Broker server.

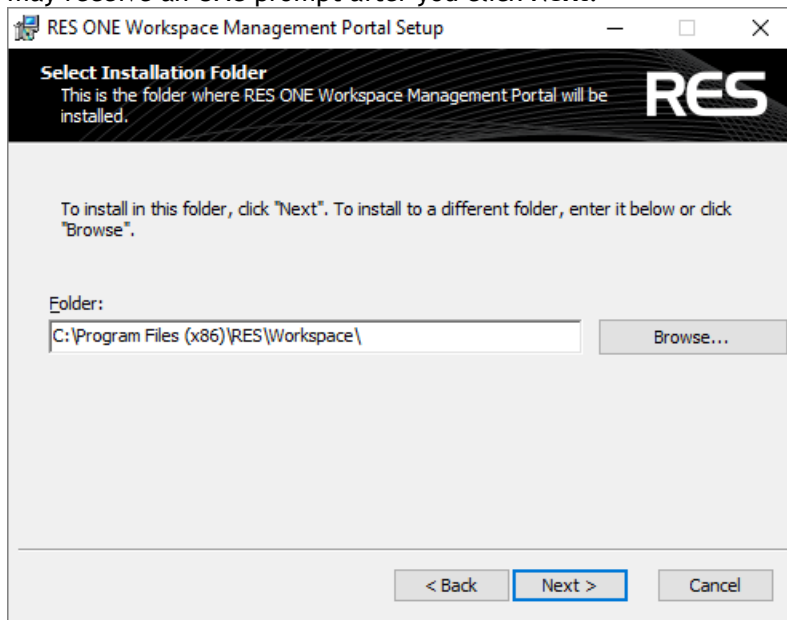
These integrations can be configured on the **Setup** pages in the Management Portal.

## 2.2 Install the RES ONE Workspace Management Portal

1. Run the RES ONE Workspace Management Portal installer on the machine. This opens the RES ONE Workspace Management Portal Setup Wizard.



2. Read and accept the End-User License Agreement.
3. Select a location for the installation. The path may consist of a maximum of 120 characters. You may receive an UAC prompt after you click **Next**.



4. On the page **Configure IIS Binding**, select an installed certificate for the SSL binding of the website. You can select from a list that is populated with computer certificates from the

### Personal and Web Hosting Certificate Stores.

**Configure IIS Binding**

The RES ONE Workspace Management Portal will be listening to the provided binding.

Hostname: \* Port: 443

Select installed certificate  Generate Self-Signed Certificate

Select Installed Certificate:

Certificates listed here are installed in the Local Computer Personal certificate store.

< Back Next > Cancel

- For testing purposes, the option **Generate Self-Signed Certificate** is offered on Microsoft Windows 8 and higher / Microsoft Windows Server 2012 and higher. RES recommends not to use self-signed certificates in a production environment. Self-signed certificates require PowerShell 4.0 or higher. The Host name you specify must be known on your internal and external DNS servers.
  - In IIS, the installation creates the website RES and deploys the Management Portal as the web application **RES > Workspace**.
    - If the website RES already exists in IIS, this step in the Setup Wizard is skipped and the actual installation begins. The binding configuration is then already in place.
5. After completion of the Setup Wizard, the RES ONE Workspace Management Portal is installed and a shortcut to the Management Portal URL is placed on your desktop.

**Installing RES ONE Workspace Management Portal**

Please wait while the Setup Wizard installs RES ONE Workspace Management Portal. This may take several minutes.

Status: Configuring Internet Information Services

< Back Next > Cancel

6. Open the Management Portal, logging on with your Windows user account or User Principal Name (UPN - the name of a user in the format of an e-mail address). At logon, your UPN must match a user account in Microsoft Active Directory. The Management Portal will open at the **Setup Datastore** page, where you can provide connection details for your existing RES ONE Workspace Datastore, either manually or by importing a connection string file.