

MIGRATING FROM AVALANCHE 4.6+ TO AVALANCHE 5.3

This document provides instructions for migrating to Avalanche 5.3 from versions of Avalanche (MC or SE) 4.6 and newer. To migrate from an earlier version of Avalanche, you must first migrate to a 4.6 or later release of Avalanche and then you will be able to move to version 5.3.

MIGRATION

The following table provides information about which migrations are allowed with Avalanche 5.3:

Current version:	can migrate to:
Avalanche SE 4.7 or newer	Avalanche SE 5.3
Avalanche SE 5.3	Avalanche MC 5.3 with internal PostgreSQL databases*
Avalanche MC 4.6 or newer with PostgreSQL databases	Avalanche MC 5.3 with internal PostgreSQL databases
Avalanche MC 4.6 or newer with MS SQL Server 2005 databases	Avalanche MC 5.3 with MS SQL Server 2005 databases -OR- Avalanche MC 5.3 with MS SQL Server 2008 databases
Avalanche MC 5.0 or newer with MS SQL Server 2008 databases	Avalanche MC 5.3 with MS SQL Server 2008 databases

* If you want to migrate to Avalanche MC 5.3 from an older version of Avalanche SE, you must migrate to Avalanche SE 5.3 first.

NOTE: If you are using Avalanche MC with external databases (MS SQL Server), please refer to *Migrating to Avalanche 5.3 with External Databases* for migration instructions. Cross-platform migration (e.g., from MS SQL Server to PostgreSQL) is not supported. If you are using Oracle or external PostgreSQL databases, please contact Wavelink Customer Support for migration information.

The installer for Avalanche 5.3 backs up the enterprise database, profiles, and software packages, removes the previous version of Avalanche, and migrates to the new version. The migration also updates PostgreSQL (to version 9.1) and, if necessary, Tomcat (to version 7.0). Scheduled events and completed reports (in PDF, XML, or CSV format) are not migrated. Device statistics, mobile device details, and some report definitions are not retained (the migration.log displays a list of reports not migrated).

Once you have begun the migration, Wavelink strongly recommends not canceling or interrupting the migration process.

To migrate to Avalanche 5.3:

1. Back up your current version of Avalanche. If you want to retain completed reports, ensure they are saved somewhere other than the Avalanche installation directory.
2. Obtain the Avalanche 5.3 installation file from the Wavelink Sales team and save it to the computer where Avalanche is currently installed.
3. Close other applications running on the computer.
4. Double-click the installation file to start the migration process.

An *Upgrade* dialog box appears indicating that there is a previous version of Avalanche installed on your system and asks if you want to upgrade.

5. Click **Yes**.

The *Wavelink Avalanche InstallShield Wizard* appears.

6. Click **Next** to continue the migration process.

The *License Agreement* screen appears.

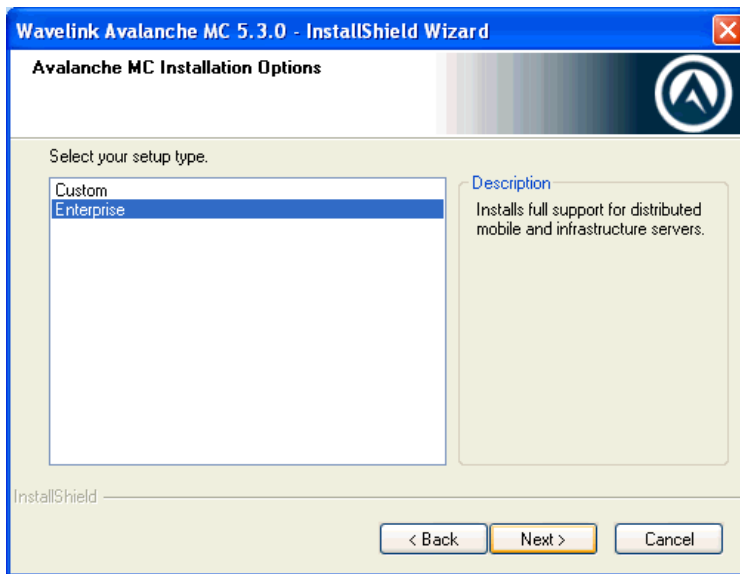
7. Click **Yes** to agree with the terms of the License Agreement.

The *Postgresql Super Account Password* screen appears.

8. Specify a password for the PostgreSQL databases. This password must meet the domain password requirements set by your network administrator, but does not need to match the PostgreSQL password for the current install. **Retain this password for your records.** Type the password again to confirm and click **Next**.

The *Organization Name* screen appears.

9. Type the name of your company or organization and click **Next**.
 - If you are installing Avalanche SE, the *Choose Destination Location* screen appears. Go to step 11.
 - If you are installing Avalanche MC, the *Installation Options* screen appears.



10. Select which installation type you want to install and then click **Next**.

- **Custom.** Allows you to choose which components to install. If you choose **Custom** and click **Next**, you will be prompted to select the desired components.
- **Enterprise.** Installs full support for distributed mobile device and infrastructure servers, the enterprise server, the statistics server, and the databases.

The *Choose Destination Location* screen appears.

11. Click **Next** to accept the default installation folder or browse to a different location.

The database backup and removal of the previous version of Avalanche begins. The size of your database affects how long this takes. Do not cancel or interrupt the migration process. If the migration is interrupted, you may need to call Wavelink Customer Support.

NOTE: The following two dialog boxes only appear if you are migrating from Avalanche SE to Avalanche MC.

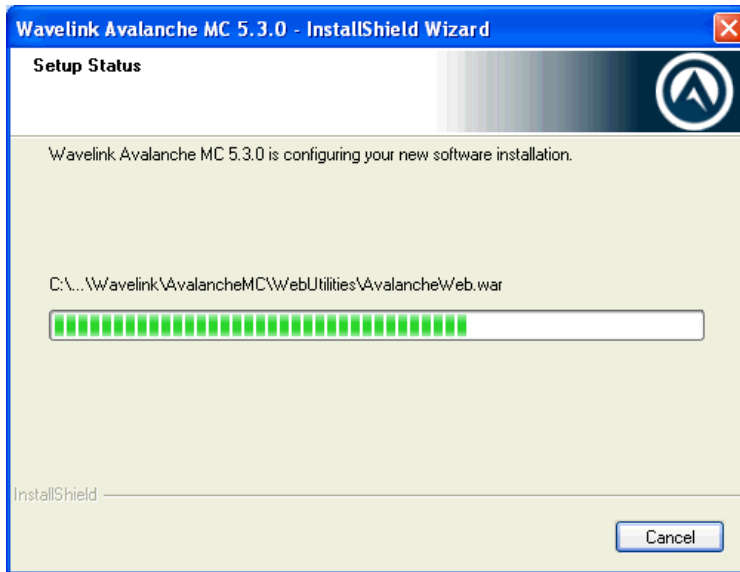
A dialog box appears reminding you to remove the previous version of Avalanche.

12. Click **OK**.

A dialog box appears reminding you to remove the database when prompted. Removing the previous database will allow Avalanche to upgrade PostgreSQL to the latest version. The information in your database will be saved and reformatted to function with Avalanche 5.3.

13. Click **OK**.

The older version of Avalanche is uninstalled and Avalanche 5.3 begins to install. The *Setup Status* screen appears.



14. When the installation is complete, click **Finish** to close the installer.

The `migrate.log` file is created during the migration. This file provides you with a log of the migration process and a list of the components that were migrated. Review the `migrate.log` file located in the default installation directory for a complete list and details of all components migrated.

15. Open the Avalanche Console and perform a Universal Deployment to re-establish communications with your distributed servers.

Any deployed Mobile Device or Infrastructure Servers will be set to a dormant state, and will not attempt to communicate with the devices or the Enterprise Server until a Universal Deployment occurs. To upgrade the servers to the new version, create and deploy new server packages. When you create Infrastructure Server packages, create the full deployment package, not the lightweight version.

NOTE: Wavelink strongly recommends using the Task Scheduler to uninstall and then redeploy any infrastructure servers that are older than 5.0.

Once you migrate to Avalanche 5.3, you may need to obtain new licensing. Contact Wavelink Customer Service for more information.



Wavelink Corporation
USA and Canada: 1.888.697.WAVE (9283)
Outside the USA and Canada: + 800 WAVELINK (9283 5465)
CustomerService@wavelink.com

www.wavelink.com

